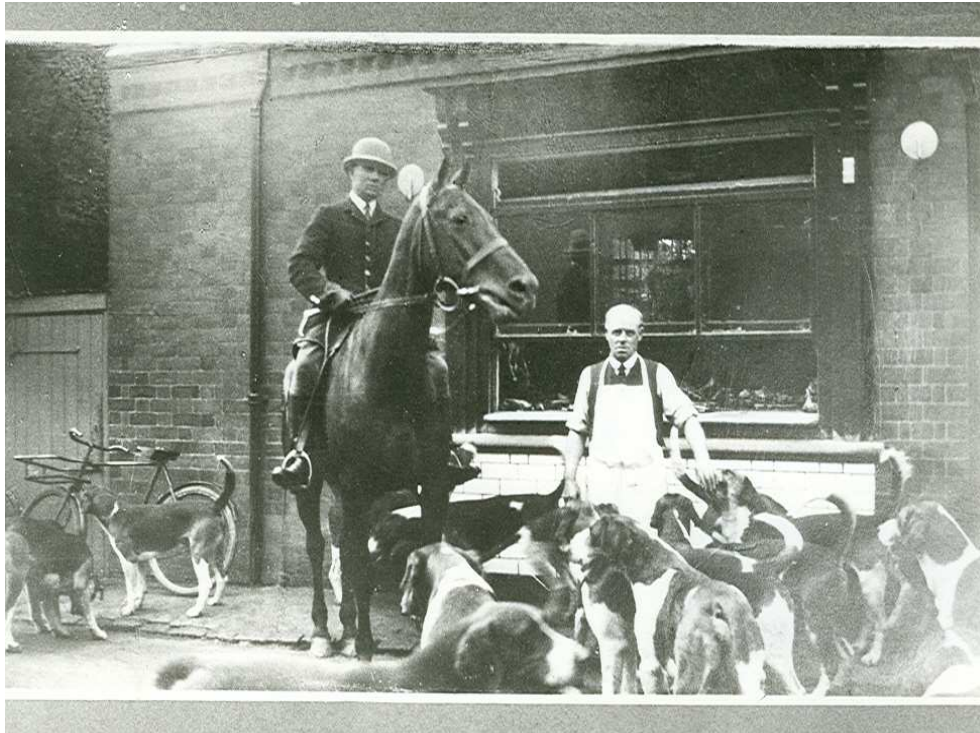


## A PHOTOGRAPHIC HISTORY OF ASFORDBY



The photograph shows Alf Bailey in front of his shop visited by a Quorn Huntsman. This is something of a controversial subject at the moment.

What memories do you have of local hunts and other events in years gone by? Please let us know and we will publish your memories in the next issue of Asfordby Parish News.

If you have any old photographs that you would be happy for us to publish we would be very pleased to hear from you.

# It's Your Parish

*Written by Mr. John Bullimore, Chairman of Asfordby Parish Council*

I'd better start by saying that I hope that you had a happy Christmas, especially those of you who live alone. I know that it's not always the best time of year for you. I completely forgot about it when I was putting together my piece for the October issue but now it's the beginning of yet another New Year. For me they come around far too quickly but it gives us all the opportunity to start afresh with all those hopes and dreams that we all have.

2004 was a good year for your parish council. We gained Quality Status - a government benchmark of our administration and general ability. Even now, a year later, there are still very few of these in the country as a whole. We were fortunate enough to be awarded the title of Council of the Year 2004 but we are still "rubbish" as far as some of our regular detractors are concerned. Leics. County Council marked the occasion by presenting us with a framed certificate in recognition, which was a nice gesture and appreciated by the Council. Success in most forms is very often less worthy of comment than failure but we are very proud of both of our achievements and hope that you are as well.

Another village success, which for you should be the most important of all, was the wonderful Ofsted Inspection Report awarded to Asfordby Captains Close Primary School. Both they and you should be enormously proud and pleased for your children's sake. I know that the headteacher, staff and governors won't blow their own trumpet so I feel that I must do it for them. To achieve this they have all had to work together as a team, which they do very well. They also have something that, for a primary school, is nearly unique and that is a male member of staff (apart from the headteacher, that is). A male teacher at a time when single parent families are, unfortunately, on the increase is for many children an important part of the missing male bonding and contact that is so important in growing up. I know this for a fact with one of my own grandchildren as this teacher has made a lot of difference both to his education and to his everyday life with that missing men's talk of football and other things that fill the void and make life just a little more normal. One other group that shouldn't be forgotten is the very active P.T.A. who raise an awful lot of money for those little extras that the children would otherwise miss out on. Also, the classroom helpers make life that much easier at times for the teachers, who really do work extremely hard. So you don't need to send your children out of

the village to get their education off to a good start. The other man's grass isn't always greener, believe you me and, like the shops in the village - if you don't use it then you could lose it all.

While I'm talking about education, I was invited to open the pre-school's new play/adventure area a couple of months ago. What a wonderful set up they have. The school room is painted in warm, happy colours with good lighting making it somewhere that the youngsters couldn't be anything else but happy and they are learning without realising it. The staff and helpers were all great and obviously, along with the children, enjoyed what they were doing (although I wouldn't do it for two pensions). So all of you who have children of an age to go to pre-school or primary school, we in Asfordby have both places that you can send them to with confidence. If you live within walking distance, try it and then going to school will do you good as well.

I had cause to go to the surgery a little while ago and what did I get? Music to be ill to. The receptionist was listening to Norah Jones singing "Come away with me". If only! Far better than a doctor and any medicine. But how pleasant to have just a little background music that you could enjoy and you could still hold a conversation with someone sitting at the side of you, unlike wedding discos. I can't wait to go again but I hope that Norah's not left yet, although Dido will do for me. You don't get too many smiling faces in a doctor's surgery and this should certainly help. I wonder if customers have increased. I think my blood pressure has just gone up a notch! What's the surgery phone number, Daph? Unfortunately, I don't seem to get excited very often nowadays - but that's another story - although the new cemetery extension and improvements are something that is doing just that. I know, how sad can I get? But the new gates really do look great. They just set the cemetery up a treat so when we get a nice sunny winters day at the weekend, go down and have a look at them. You never know, the next time you go through them you might not be in a position to actually see them and that would be a shame. If we are lucky enough to get a grant from the County Council, this time next year we will have something to be really proud of with a nice grassed area for quiet reflection on perhaps a couple of seats that someone might eventually be kind enough to donate for that purpose. We have also put in a new area for cremation ashes that will be more uniform than the old one. This is something that we need to do to make maintenance easier and less expensive. I've had lots of good comments already and although I know that we won't be able to please everyone, I'm sure that the majority of you will be pleased with the improvements.

## **ASFORDBY GARDEN CLUB**

The Garden Club has had a very successful year and we would like to invite anyone with an interest in plants and gardens to come along to our monthly meetings. Garden visits are also planned during the spring and summer.

The 2005 programme begins on January 10th at 7 p.m. in Captains Close school hall with an illustrated talk by Roy Turner entitled “Exhibition Daffodils”. Because it is the school’s half-term, the February 14th meeting will be in the Methodist chapel at 7 p.m. John Gregory of East Stoke’s title is “Flower Power Plus”. Members will visit the Grange Garden Centre at Asfordby Hill for a demonstration and refreshments on March 14th. A return visit by Josie Hutchinson of Brooksby College is planned for April 11th at the school. Come and join us.

## **Level (?) Crossing**

After recent track repairs on and around the level crossing in Station Lane, the surface at the crossing is now a disgrace and dangerous. We have complained to the Highways Authority who, in turn, have complained to the body responsible for track maintenance in this area. We are still waiting for action to be taken.

## **Improving our Services to You**

The government has set aside £300,000 to fund projects by Quality Councils to improve the services that they offer. Asfordby Parish Council has applied for the maximum grant of £10,000 to purchase a new “Green Machine” motorised pavement sweeper to replace our ageing machine, which was bought second-hand four years ago.

If we are successful with our application, you should see the new machine around the Asfordby villages some time in the early spring.

### **OOPS!**

Overheard at a Methodist Coffee Morning. Minister to elderly visitor, “You look like someone about to depart.” Had Head Office been in touch?

## **Pilot Transport Extended**

The Transport to Health project, which was launched in October 2003, has been extended to the Melton Borough area from June 2004. The service helps people with mobility impairments or who are rurally isolated to get to and from health appointments.

Leicestershire County Council is the lead partner in this scheme, which also includes the Volunteer Bureau and Melton, Rutland and Harborough Primary Care Trust. The service will be run by Melton Volunteer Bureau, which will liaise with health care providers.

Harry Barber, the County Council Cabinet Member for Transportation said, “I am delighted to see these organisations in Leicestershire working together to help the community in extending this scheme. This co-ordinated approach to transport will help passengers who in the past have found it difficult to get to health appointments which are necessary for health needs.”

Melton Volunteer Bureau has a team of volunteer drivers who can take passengers to and from their appointments. Volunteer drivers have been taking people out and about for years however, this extra funding will enable more people to benefit from this scheme and access their health appointments. Passengers pay a contribution towards the cost of the volunteer driver’s mileage.

As the demand for journeys grows, more volunteer drivers will be needed so a recruitment campaign is underway.

To find out more about becoming a passenger or a volunteer driver, please call 0116 265 8177 or Melton Volunteer Bureau on 01664 482903

## **Free Gifts**

While stocks last the Parish Council is giving away a free Frolic Funball for your dog with packs of “poop scoops”, which are always available free of charge from the Parish Council office at Asfordby Parish Hall. We are open on Tuesdays and Fridays from 9.30 a.m. until 12 noon.

Don’t miss out on this opportunity to get a free toy for your dog and to help keep the pavements and play areas in the community healthy and clean.

## **ASFORDBY HILL, THE VALLEY AND VILLAGE AND THEIR CONNECTIONS WITH OUR FAMILY**

**Written by Ivor Paulson, Asfordby Valley**

### SINFIELDS FOR YOUR HAIR CUT

Yes, we had to have our hair cut at Sinfields, a little shop near to the Fish and Chip Shop. It left it looking as if you had had a basin on your head (3 old pence).

### SAM PAULSON'S 50 YEARS AT STANTON IRON WORKS

My dear grandparents, Sam and Martha, lived at 15, Glebe Road. Sam gave almost 50 years service to the Stanton Iron Works company, working on the furnace barrows (the size of a horse cart). Five children, Betty still surviving and just been over for her 15th visit to Asfordby from Perth, Australia at 85 years old. There's no place like home she says.

### MR DRAYCOTT AND FRANK SARSON

Dad's schooling was at Asfordby Hill School under Mr. Draycott, who was headmaster there. His gardening career started with his employment at Frank Sarson's in Asfordby, now remembered as Sarson Close. Then to his life times work at the Co-op nurseries, Rotherby, growing lorry loads of tomatoes, cucumbers and salad crops. Many people cycled from Asfordby to buy them.

### ASFORDBY HALL

My mother, Dorothy Paulson, started her working life at Lady Cross's at Asfordby Hall (She has a photo of the Hall somewhere). At 14 she recalls having to stand in for the cook who was ill and getting a compliment from Lady Cross for her work. That's 75 years ago. Mother is now 89 and still going strong.

### OUR TRANSPORT TO ASFORDBY

This was by walking as a family from Rotherby. No buses and no money in any case. Down the gated road to Frisby crossing. Gatekeepers were the Branston family. Lovely daughters I recall!! Then by Bailey's Hovels - at speed if it was dark in case anyone jumped out - mother in charge at this point. Then across the footpath from the Red Lodge Farm to the village, perhaps a quick call at the 'Shoes' for some refreshments or call in at the Co-op (where the kitchen centre now is) or a shop I think was called Carter Stores. Opposite side of the road? Then to Bailey's Butchers, a little shop opposite. The shop is there today. I seem to remember a little stream running down the side of it and a lady who

always sat in the little office in the corner. Her name was Miss Mary Astill from Kirby Bellars. Yes, Baileys called on my mother then and are still calling on her today, 70 years further on. Some service that is - what shop can better that? On past the Valley where we now live, calling if we could to spend a penny in Mrs. Plant's magic little sweet shop (the shed is still there). Then up the hill past the famous Stanton Iron Works chimneys. Then past the Stanton Iron Works Farm at the top on the right with its dairy for milk and cream served in a kind of waxed type of paper carton. Mr. McClaren was the manager.

#### CHRISTMAS AT GLEBE ROAD

Christmas, yes, and the visits to Sam and Martha Paulson's. The memories of Hornby train sets purchased from Marriot's shop in Sherrard Street - a lovely shop - along with Meccano sets too. The hilarity when the cat got its paw stuck in half a walnut shell. It tore along the landing (lino then) frightening itself with the noise and its difficulty in standing up made things worse.

#### WAR TIME AND THE VALLEY BOMBS

I recall the night the bombs fell on Asfordby Valley. We were at home in Rotherby that night. "Get under the table!" mother said. Some table! Then dad arrives home. He was at the Home Guards' meeting in Kirby Village Hall when the bombs fell. Captain Forsell instructed them to lie on the floor, lights out but when Captain Forsell called them to attention he found out most of them had gone home to see if their families were still alive. Dad was dripping with sweat, saying he had just come up Chalk Pool Hill on his bike, not knowing it ever existed. The bombs were, of course, aimed at Holwell Works.

#### BARTONS - GAS DRIVEN BUSES

I recall staying at Glebe Road during the war and catching buses to Melton which were at that time driven by gas from great bags fixed on the top of the bus - turning a single decker into a double decker. You could wait in Glebe Road until you heard the bus grinding its way up the hill and still walk to catch up with it.

#### LIVING IN ASFORDBY VALLEY FOR 40 YEARS

We never thought we would come to live in Asfordby Valley but it has been a lovely spot to live in and we have been very happy here. We were able to purchase the house cheaply because of the horrendous noise, at that time, from the Gun Range shell testing. Shells that exploded and shook the houses yet never woke the twins up with the noise they made.

(Continued over the page)

## **ASFORDBY HILL, THE VALLEY AND VILLAGE - Continued**

### THE ASFORDBY HILL MISSION HALL AND THE HILL CHAPEL

I recall having to go to the Sunday School at the Mission Hall - a large wooden building on the Main Road opposite the school. It was later wrecked in a traffic accident. Both our daughters attended the hill chapel and both daughters became Sunday School teachers there. The wellbeing of the chapel was in the hands of Mr. & Mrs. A. Hall, who did so much for the chapel, a part of the community. Our elder daughter, Susan, was married there. When we moved to the Valley, Wilf Plant was selling Lambretta scooters like there was no tomorrow. He also sold petrol and in our van we had to make 10 shillings worth of petrol last us the week (that's 50 pence worth today). We freewheeled whenever we could.

### THE VALLEY IS LIKE A VILLAGE COMMUNITY

During the many years we have lived here we have seen the Valley people pull together in times of need. Like defending their rights in the building of Valley Fields and the fight to get protection against the terrible floods, which so many have been seriously affected by. And if anyone is in trouble, help from a neighbour is never far away. Many of the people who live here (us included) do know what the bad times were like and that's what makes such a bonded community and great people.

*Written by Ivor Paulson, Asfordby Valley.*

### **Black Spot**

Sadly, Asfordby is fast gaining a reputation as a "black spot" for fly tipping. The dumping of old tyres in particular has become a problem and it seems clear that a business or businesses are dumping quantities of tyres in secluded areas.

Anyone caught fly tipping will suffer severe consequences and we hope that you will help us to keep Asfordby Parish an attractive area to live by reporting anyone that you see engaged in this activity either to the Parish Council office on 812177 or directly to Melton Borough Council Waste Management on 502502. Please take a note of the vehicle registration number and, if appropriate, the name of the company on the vehicle.

## News From the I.C.T. Centre

Six months ago a new computerised booking system called Netloan was introduced. This is the system which manages the bookings of the computers in the Leicestershire County Council libraries and Asfordby ICT Centre was the first in the Melton area to start using it. Users of the computers are given a PIN when they first register and then they are able to log on without having to ask staff and can also book sessions ahead. It means that users can become much more independent and manage their computer time on their own. From the library's perspective it saves staff time in having to log people onto computers and also provides detailed statistics of use. In the first six months of the system we can see something which is very encouraging. 51% of use in this period was by young people aged 10 - 19 and is pleasing at a time when libraries are finding it hard to keep this age group within their doors.

However, the centre is open for and is used by all ages. Older people seem to find the Friday and Saturday morning sessions particularly useful. The quieter atmosphere on these mornings suit those who are starting to learn computer use and the Internet and of course the free and easy parking is always a bonus! People can drop in for a taster session on using the Internet at any time and staff will give a hand to boost confidence.

We have a new computer for use by young children with some special packages to help learn in a fun way - come and be a science explorer, learn numbers or learn alongside the cute little polar bear. It's all free of charge and is an opportunity to learn a little alongside your child.

During February and March 2005 we are getting involved in "The People's War" which is a BBC project. We will be asking local people to come along with some of their war memories. If you are interested, we can give a hand in showing you what the BBC People's War website is and how to take part.

Opening times are Monday - Thursday 4pm - 8pm. Friday and Saturday 9am - 12 noon. Computer use and Internet access are free. A charge is made for print-outs. For children doing homework the printing charges are reduced.

Come along and try out a facility on your doorstep - whether it's for homework or a hobby, our computer facilities could open up a new opportunity in your life.

*Janet Gilchrist,  
District Community Manager.*

## RURAL LIFE

Idyllic views and frost coated villages are often the images we conjure when thinking of rural England at this time of year however, all too often this picture postcard image masks deep rooted problems of stress, depression and isolation.

Living and working in rural areas creates its own unique difficulties such as lack of services, employment concerns and high cost of housing which affects the community as a whole. Whilst some may be able to cope with these stresses, for others they can lead to suffering from distress which can result in long term mental health problems and, at the far end of the scale, suicide.

The Rural Stress Support Team actively works to reduce this suffering through emotional support and information provision. Callers to the helpline can access confidential listening support and signposting to organisations who can offer practical support.

A team of twelve training volunteers provide free home befriending visits to callers allowing them the opportunity to talk through their situation in a comfortable environment and at their own pace.

For further information about the work of the Support Team or to enquire about volunteering as a befriender please contact Heather Roythorne at:

Office: 0116 268 9712      Email: [hroythorne@ruralcc.org.uk](mailto:hroythorne@ruralcc.org.uk)

Helpline: 0116 261 3121      Website: [www.ruralstress.co.uk](http://www.ruralstress.co.uk)

THIS IS YOUR NEWSLETTER.  
WE NEED YOUR ARTICLES, STORIES, INFORMATION  
ABOUT YOUR ORGANISATION'S FORTHCOMING  
EVENTS FOR THE NEXT ISSUE OF ASFORDBY PAR-  
ISH NEWS BY NO LATER THAN  
**8TH MARCH 2005**

## PLANNING 2004

2004 has been a difficult year for us as far as planning applications are concerned. We accept that a certain amount of new development within the parish is inevitable and in some cases it could bring real improvement, but the Parish Council wants to see good design and good planning decisions that are taken in the best interests of the community. We probably will not see the results of bad planning decisions but future Asfordby residents certainly will. Responsible planners should plan for the future as well as for present needs.

Central government encourages and enables developers to build almost anywhere within the existing village boundaries and this makes it extremely difficult for the Parish Council to exert much influence over planning decisions. We are also fighting ongoing battles against inconsistent recommendations made by planning officers to the Planning Committee and Leics. County Council's highways officers' recommendations that seem to demonstrate that more or less "anything goes" in terms of what constitutes suitable accesses to new developments from Main Street. Our concerns about the large number of vehicles that will need to gain access to and from Main Street from the various proposed new developments are ignored both by the highways authority and the planners.

Contributions to our community from a developer are currently not considered to be acceptable by the planners but the County Council's regular request for a contribution towards King Edward VII Upper School is always accepted by them! We believe that money that comes from a developer should be used within the community that has to suffer the development and money allocated for education should be spent at the Asfordby Schools. We are also campaigning to be taken seriously in our efforts to secure funds from developers to develop better facilities within Asfordby Parish to meet the growing needs of the community.

We have asked Melton Borough Council to allow parish councils an input into planning decisions at an earlier stage than at the present time to prevent the need for confrontation at Planning Committee meetings where our spokesperson is allowed only three minutes to put the Parish Council's case.

Achieving the best for Asfordby Parish in terms of planning is not an easy job but, despite that, we will not give up until we have changed the system.

## **All Saint's Church**

A happy New Year to everyone. We are pleased that there is now, once again, a toddlers' group meeting in All Saints on Monday and Wednesday mornings and that we are able to have 5 - 10 Club meetings on Saturdays preceeding significant Christian festivals. The next being Christingle. There will be a 5 - 10 Club activity session from 10 a.m. to 12 noon on Saturday 5th February and a Christingle Service on Sunday 6th February.

For further details of any of these activities, please contact me on 813994.

*Isabel.*